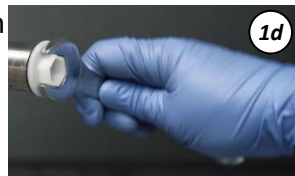
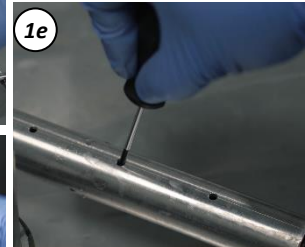


Regular Service Guide – ADS 800, Version 0 from 24.10.2022

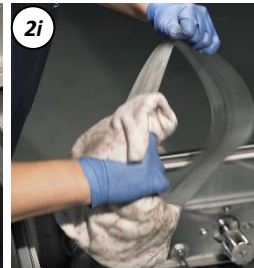
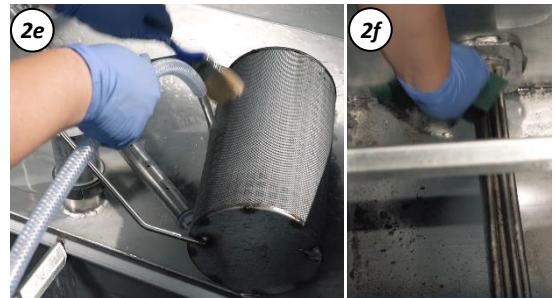
1 Clean the spray jets/boom:

- Open lid
- Remove customer parts and carefully put to one side
- Remove centre pin and basket
- Unscrew end caps x 2 on spray boom
- Clean jets with small screwdriver
- Close lid and run for 1 minute to clean the spray jets/boom
- Isolate power
- Refit 2x end caps on spray boom



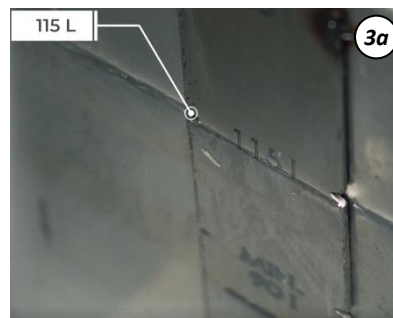
2 Clean filter, heater, temper./level sensor, belt and water tank:

- Remove and clean tank cover trays
- Drain liquid before removing filter using a puddle pump.
- The very bottom residue can be emptied via the drain tap on the right hand side of the machine with a small bucket, squeegee.
- Clean bottom of tank with rags
- Remove and clean filter
- Wipe heater
- Wipe temperature sensor
- Wipe low level sensor
- Wipe skimmer belt (if fitted)
- Close drain valve
- Clean internal and external surfaces of machine as needed with „Steel Mate“ using, rags and scotchbrite
- Refit filter



3 Refilling of cleaning fluid:

- Ensure drain valve is closed before filling. Fill with water to optimum level (115ltrs).
- Add chemistry – 4ltrs of Storm 1 or 4kg of Power Clean or 5ltrs of Super Bee
- Add 1 bottle cap of defoamer „FC 101“ (or „Case Foam NS“).
- Refit Trays
- Refit basket and centre pin
- Close lid.
- Test machine.
- Clean working area of any spills.
- Obtain customer signature.
- Organise waste collection.



You can find this and other VIDEO guides on landing page:

For service and supplies please contact:

NCH

ADS 800

Tel: 01902 510333

* „Case Foam NS“ doesnt contain silicone and is very expensive!

ADS800

Equipment needed for service:

Rags



Scotchbrite



Squeegee



Drum for waste



Puddle pump



Screwdriver



Scraper



Brush



8/10mm socket/spanner



65mm spanner



FC 101 defoamer



Steel mate cleaner



Storm 1



Spare Parts to send back to FF for refurbishment:

- Control panel
- Pump
- Drive Motor



Spare Parts to scrap:

- Low level probe
- Gas Strut
- Thermostat
- Heater
- Safety lid switch
- TP100
- Safety Cut Out Heater Switch